

Contact: Michael Sendermann
Date: 23.05.2008
Topic: Böcker at the Intersolar 2008

**Transport system for the safe assembly of solar panels
- Böcker's solar panel transport platform and solar panel fitting platform at the 2008 Intersolar in Munich**

Böcker, based in Werne Westphalia, will exhibit its products at the Intersolar 2008. On the trade show in Munich, Germany, the company will present specific transport solutions for solar cell panels which are exactly tailored at the Böcker models Toplift ECO and HD Junior.

The Toplift ECO ist a compact ladder lift. Its rail elements are connected in a simple step up to a total height of 20 metres. The lift can be equipped with an optional knee joint to adapt the rail system to the pitch of the roof. The Toplift Eco excels by its simple operation and is therefore the ideal machine for beginners.

The models of the HD Junior series are the more powerful alternative to the Toplift Eco. Those construction lifts are mounted on trailers with maximum lifting heights of 24 metres. The models of HD Junior series have been particularly designed for narrow construction site as models require minimum space. Due to the retractable axle, the lift fits easily through a standard-sized door. Just like the Toplift ECO, the models of the Junior series can optionally be equipped with a knee joint for the operation on pitched roofs.

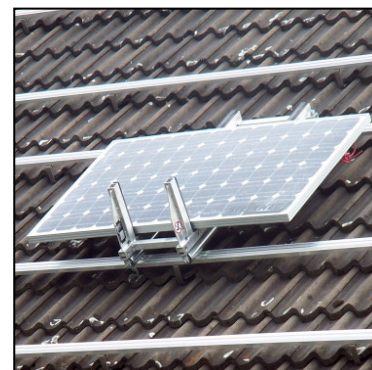
Böcker offers a self-contained transport system consisting of a solar panel platform and a solar panel fitting platform for both models. The solar panel platform is fixed on the carriage of the respective lift. It is used to transport the solar cell modules onto the roof. All bearing surfaces are rubber cushioned to protect the sensitive loads from damages.

On the roof, solar panels can be transported by the solar panel fitting platform SMV 150. This platform will be hooked in the existing assembly rails for the solar panels. Then it can be moved easily due to castors at each side of the fitting platform. So no additional assembly works are necessary to successfully work with the Böcker SMV 150.

Due to these to platforms, transport and assembly of solar-cell panels can be executed faster and more efficiently. Furthermore, they provide safety for persons and material. You will find Böcker at the Intersolar 2008 in hall B5 on booth 465.



Toplift ECO with solar panel platform



Böcker solar module fitting platform SMV 150