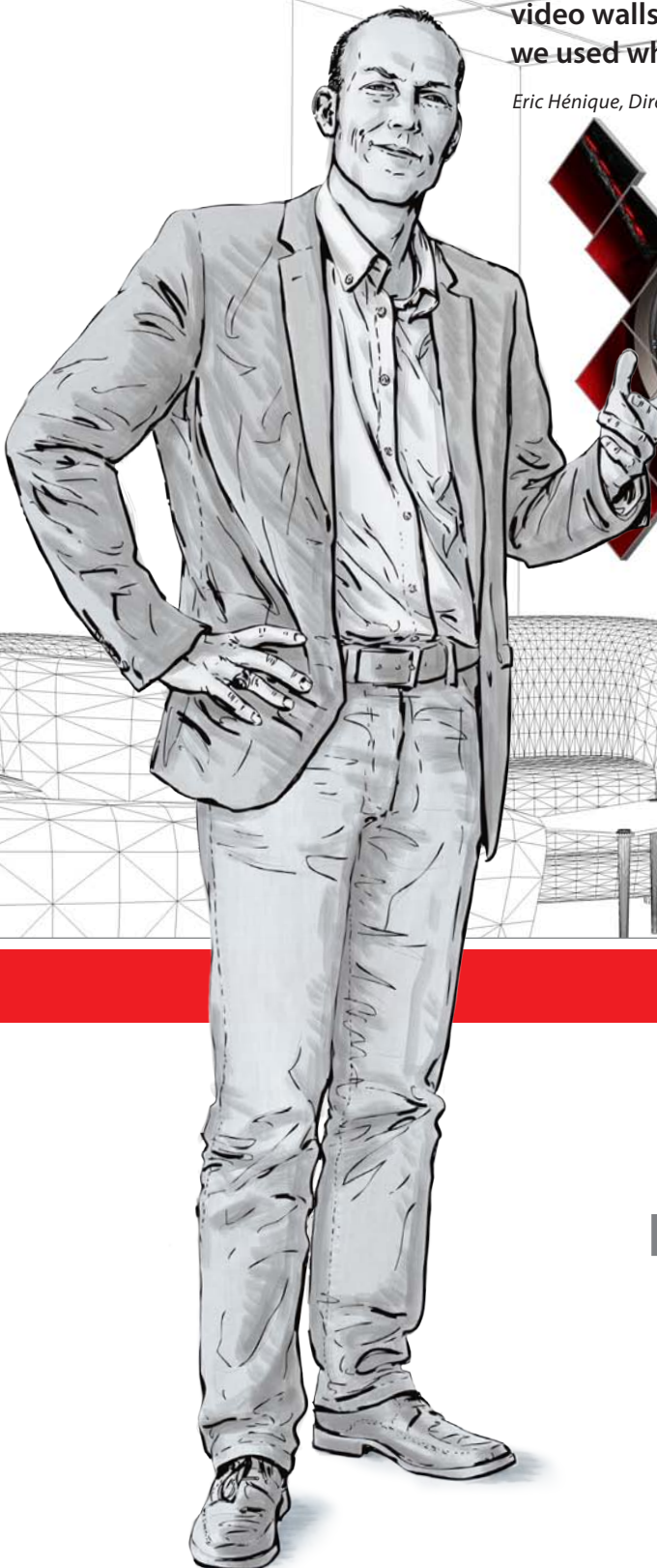


“Small, quadrilateral LC-displays, which, thanks to their compact dimensions and technical properties, are perfectly suited for creative designs in modular configurations of video walls. This requirement profile was the guideline we used when developing eyevis squareTILES.”

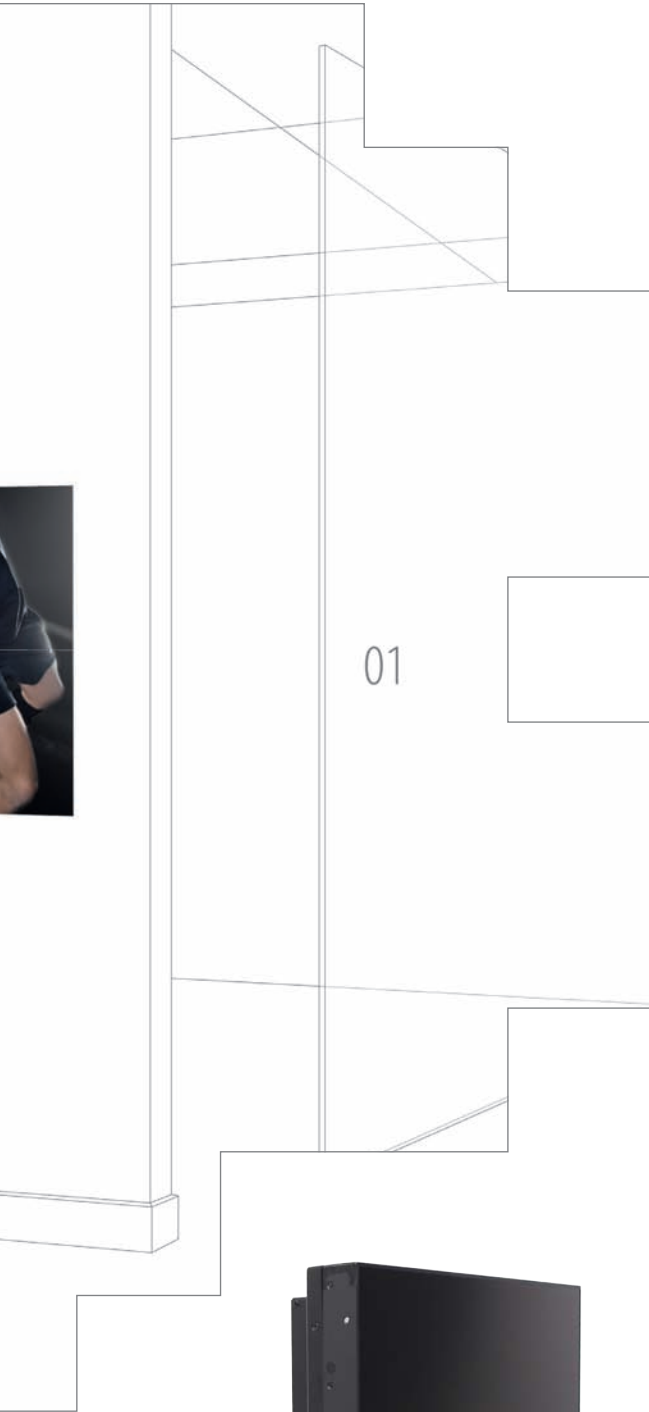
Eric Hénique, Director Marketing and Int. Sales



SQUARE, SMART, SIMPLE!

**SMALL DISPLAYS
FOR GREAT ATTRACTION!**

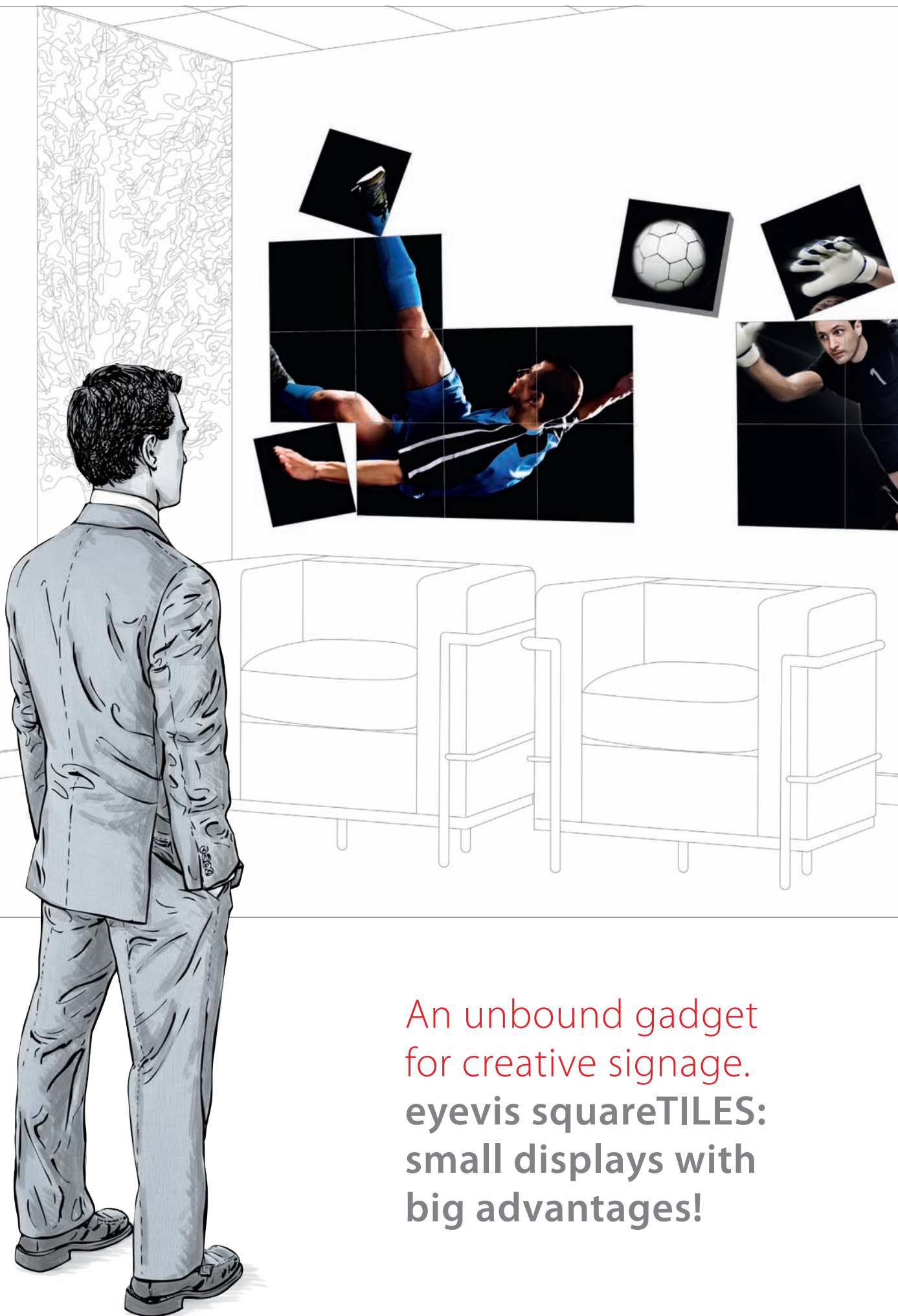
) **squareTILES**
EYEVIS PROMOLINE



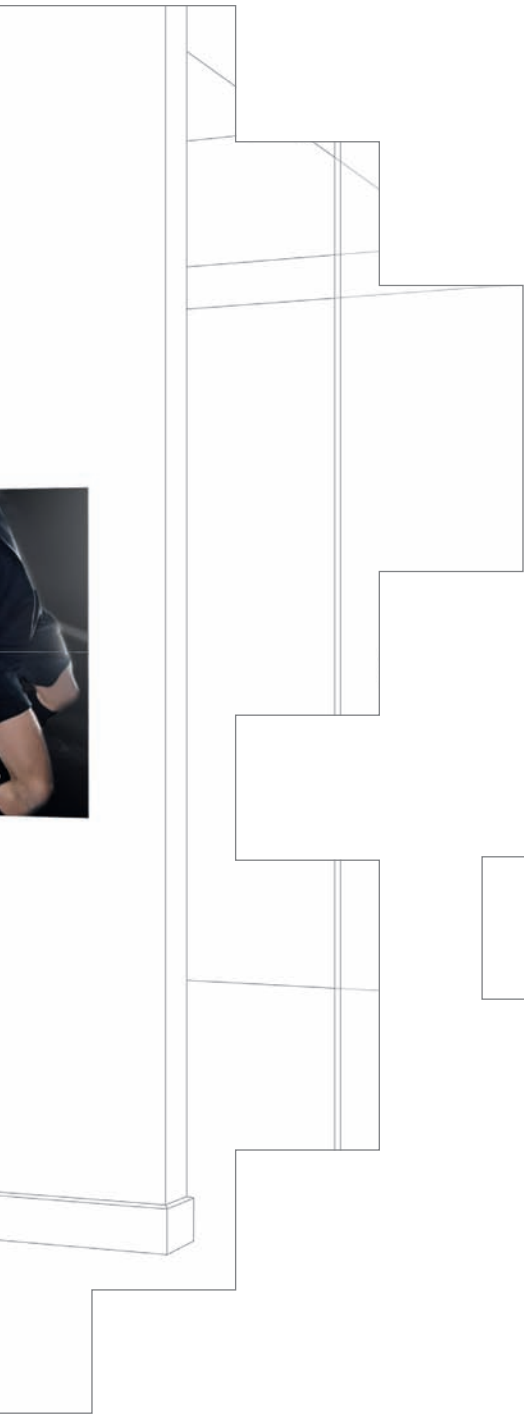
) CONVINCING ADVANTAGES

-) 21.6-inch square LCD screen
-) Ultra super narrow bezel design for seamless tiled applications
-) Direct-LED illumination for best image uniformity
-) High resolution and perfect viewing angles
-) Robust but light-weight aluminium metal housing
-) Daisy Chain for signal (DVI) and control (RS232)
-) Silent ventilation system
-) Different installation possibilities
-) Modular wall mount bracket for easy installation
-) Ideal for creative digital signage applications





An unbound gadget
for creative signage.
eyevis squareTILES:
small displays with
big advantages!



CATCH YOUR CUSTOMERS' EYES
WITH THE AMAZING EFFECT
OF UNUSUAL ARRANGEMENTS

Because of its dimensions and the underlying technology this latest development by the eyevis engineers is a first choice for all kinds of applications in promotion and digital signage.

eyevis' new squareTILES are square 21.6-inch LCD screens with an 1:1 aspect ratio, which makes them look quite exotic compared with the typical 16:9 screens we see today. And that's their major strength. The development of the squareTILES was inspired by the predominant measure of tiles in the U.S. and the creative colorful arrangements possible with these tiles. From there it was just a small step towards the development of a digital display counterpart.

Thanks to the "ultra-super-narrow-bezel design" the eyevis squareTILES can be installed in almost seamless configurations with minimal spacing between the image contents of individual monitors. They can be used as modules to create digital display systems in a closed or any other arrangement.

For example, individual squareTILES can be installed in an offset pattern, or mounted round a corner, in order to achieve an eye-catching image effect. The built-in scaler and the matrix functionality provide the possibility to realise such unusual arrangements. These features allow adjusting the image easily at any position. The direct LED backlight provides a very uniform illumination of the displayed images. The high resolution of 960 x 960 pixels and wide viewing angle further contribute not only to meet the high professional standards of creative digital signage applications, but to redefine them.

Thanks to their robust metal housing that is typical for eyevis products, the squareTILES are interesting even for the AV rental industry. Finally, all companies today are looking for ways to stand out at shows with their own stands from the neighbours.



) SETUP



SHIFT



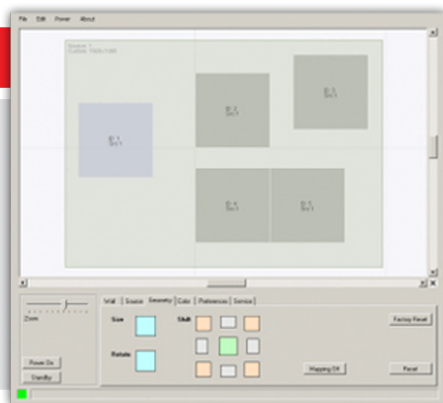
ROTATE



FLIP



MIRROR



SYSTEM CONFIGURATION

-) High quality image processing
-) Integrated scaler & matrix for easy image alignment
-) Image manipulation for any mounting position (Shift / Flip / Rotate / Mirror)
-) Setup and adjustment with same software platform as omniSHAPES
-) Easy source assignment
-) Flexible image manipulation of each single SquareTile

CREATIVE ARRANGEMENTS FOR AMAZING EYECATCHERS

The great strength of the squareTILES is their free placement options that are not bound to any raster. It does not matter if they are placed connected, single, straight or angular, with space in between or even around corners. They are always collectively controllable.

IN A ROW



WITH SPACES



OFFSET



CURVED



CREATIVE ARRANGEMENTS (E.G. AS A STAR)



) TECHNICAL SPECIFICATIONS

Display Properties

-) **Brightness:** 450 cd/m2 (typ.)
-) **Contrast:** 4,000 : 1 (typ.)
-) **Resolution:** 960 × 960 Pixel
-) **Viewing Angle:** 178° (H/V)
-) **Response Time:** 8 ms (typ.)
-) **Resolution:** 960 × 960 Pixel
-) **Pixel Pitch:** 0,403(H) × 0,403(V) mm
-) **Active Screen:** 387.36 × 387.36 mm
-) **Colors:** 16,7 Mio.

Features

-) **Bezel Width:** 5.9 mm Active-to-Active
-) **Aspect Ratio:** 1 : 1
-) **Backlight:** 208 Direct-LEDs
-) **Connectors:** DVI in/out, RS232 in/out

Mechanical

-) **Dimensions:** 393.26(W) × 393.26(H) × 100(D) mm
-) **Weight:** 7.5 kg
-) **Operating Conditions:** 0 – 40°C / 20 – 80% RH (not condensating)
-) **Life-Time:** 50,000 hours



DIRECT-LED BACKLIGHT



MODULAR EXPANDABLE



THIN BEZEL DESIGN



OPTIONAL WITH TOUCH-SYSTEM



VIRTUALLY INFINITE POSSIBILITIES
FOR CREATIVE DIGITAL SIGNAGE
APPLICATIONS

* Technical specification subject to change

) CONTACT



eyevis GmbH

Hundsschleestraße 23
72766 Reutlingen
Germany

Tel.: +49 (0) 7121 43303-0
Fax: +49 (0) 7121 43303-22
Web: www.eyevis.com
E-Mail: info@eyevis.de

 **eyevis**
PERFECT VISUAL SOLUTIONS