

Press release

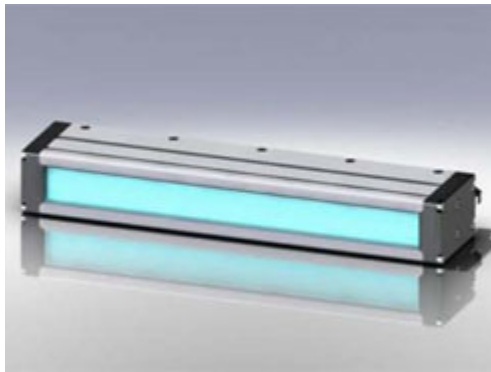
Press contact:

Jan Brubacher
Marketing &
Communication

LOTUS LED Line Light: Fluorescent Replacement for Vision Applications

Wessling, 29 January 2010 Recognising that Market conditions require an energy efficient LED replacement for fluorescent lamps, StockerYale have developed the LOTUS LED Line Light.

Laser 2000 GmbH
Argelsrieder Feld 14
D-82234 Wessling
Tel. +49 8153 405-39
presse@laser2000.de
www.laser2000.de



The Lotus was designed using proven LED technology techniques by StockerYale's R&D division to provide an alternative solution to fluorescent illumination for use in Machine Vision applications.

The Lotus has a unique design which utilises the latest LED technology combined with an integrated optical system to produce a high performance line light. The flexible design ensures the Lotus to be compatible with both back lighting and front lighting web

applications, providing a broad and uniform beam which is consistent across webs as wide as 5 meters.

Product Features & Technological Advantages

- Stable and uniform factory-set light output
- High energy efficiency, with integrated power control
- 5 year long lifetime with maintenance free operation
- Integrated optics for increased intensity and extended working distance
- Robust mechanical design with IP67 enclosure
- Compact design (40mm x 60mm) with flexible mounting features
- Stable colour temperature and intensity over the lifetime
- Any length available up to 5 metres, in 100mm increments
- Integrated intensity and On/Off control
- No necessity for complex power supply, simple 24V compatibility
- Available in different wavelengths

About Laser 2000:

ince 1986 Laser 2000 is a supplier of high technology in the field of lasers, micromachining equipment, optics, and fiber optic equipment. Our products are designed to meet the challenges of both research and industrial production as well as your actual or future requirements of your applications.

Laser 2000 is headquartered in Munich, Germany and operates local offices in all major business areas of the European market. In order to support your application we deliver top-level service and products and meet the highest standard of quality. With an installed base of thousands of applications around the world, Laser 2000 has shown the ability to provide onsite-support in time.

For further information please contact:

Patrick Herzog, Laser 2000 GmbH, Wessling
Tel.n +49 8153 405-51 • Fax +49 8153 405-33 • p.herzog@laser2000.de

Visit us:



PHOTON Expo
Stuttgart
April 27-29 2010



VISION Stuttgart
9-11 Nov 2010
Stand 4C11