



## HIGH PRECISION CNC HUMAN MACHINE INTERFACE FROM ACS

2017-05-04 | ACS | MIGDAL HA'EMEK, Israel | Products

ACS Motion Control has developed a customizable CNC HMI Platform for high precision machining and processing applications. Designed with simplicity, flexibility and ease of customization in mind, the *SPiiPlusSMC* (*smart motion commander*) software platform significantly reduces the effort and time spent by the machine builder on developing and maintaining HMI software.

Leveraging a SPiiPlus EtherCAT® based control system the SPiiPlusSMC HMI platform offers complete, high precision CNC control.

“Instead of investing significant effort to develop and maintain a CNC human machine interface, a machine builder using SPiiPlusSMC software can focus on optimizing the application and improving machine performance. This results in shorter time to market and greater machine accuracy, precision, and throughput”, said Jason Goerges, Product Marketing Manager.

The SPiiPlusSMC CNC HMI software platform is ideal for OEMs and system integrators of high precision machining and material processing equipment such as laser cutting, processing and micromachining; precision grinding; additive manufacturing, and more.

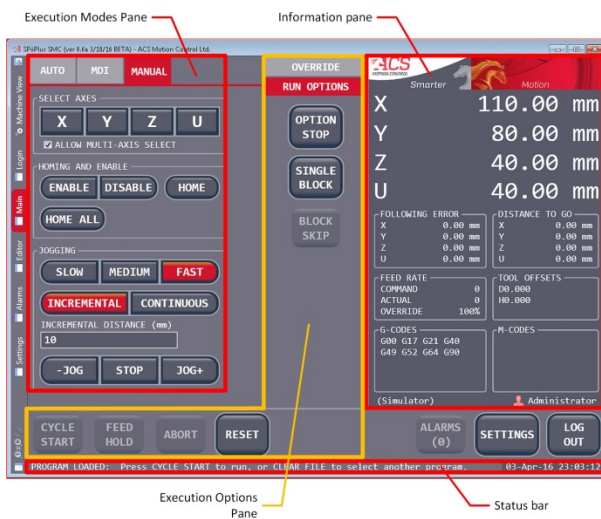
Suitable for any PC running Windows 7/8/10, XP with SP3, the SPiiPlusSMC software is optimized to require minimal Windows resources. Customization options are available through ACS and its partners, or via user created plugins.

*1,339 characters (incl. blanks)*

### PRESS CONTACT

Doris Knauer  
Phone +49 721 4846-1814  
Fax +49 721 4846-1019  
[d.knauer@pi.de](mailto:d.knauer@pi.de)  
Physik Instrumente (PI)  
GmbH & Co. KG  
Auf der Roemerstrasse 1  
76228 Karlsruhe, Germany  
[www.pi.ws](http://www.pi.ws)

Images:



The SPiiPlusSMC (Smart Motion Commander) software platform significantly reduces the effort and time spent by the machine builder on developing and maintaining HMI software. (Source: ACS)

For more information on the SPiiPlusSMC software, refer to: <https://www.acsmotioncontrol.com/spiplusmc>

Contact ACS by e-mail at: [sales@acsmotioncontrol.com](mailto:sales@acsmotioncontrol.com)



### **About ACS Motion Control**

An international manufacturer of advanced multi-axis motion controllers, machine controllers and integrated control modules, ACS provides standard and custom products that combine power and precision to deliver flexible, economical, user-friendly motion and machine control solutions. Established in 1985, ACS' international headquarters is located in Israel and its North American headquarters resides in Bloomington, MN. ACS also has facilities in Germany, South Korea and China, and distributors worldwide that deliver dependable customer service and product support. ACS is an ISO9001-certified manufacturing facility, demonstrating its continuous commitment to providing customers with reliable devices that are thoroughly tested with the latest available techniques.