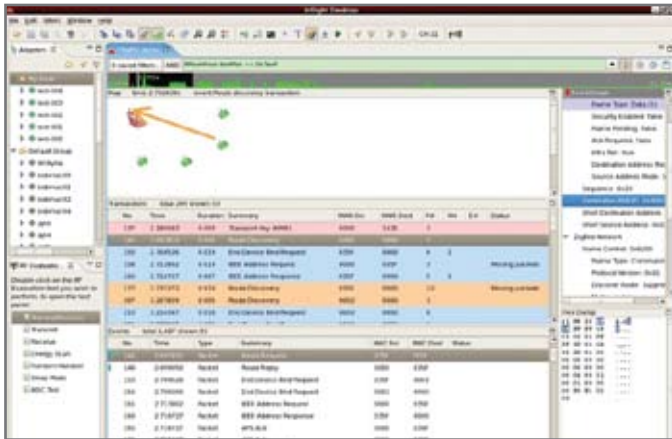


# InSight Development Kit

Development Tools for Embedded ZigBee Wireless Applications

Tools

## Fact Sheet



InSight Desktop

## Ember's Customers Are Saying

"...We broke a record in our company for application development..."

"...It is as close to 'plug-and-play' as anything I have seen in the industrial world..."



EM35x Development Kit

## Embedding Value through Wireless Connectivity

Ember's Development Kits are an integral part of the Ember InSight Development Environment, the premier embedded ZigBee wireless networking development platform, consisting of software and hardware tools that are the most comprehensive tools available for ZigBee product development.

The foundation of these tools is the remote network monitoring and debugging capabilities built into every element of the development environment, starting with Ember chips, which have designed in a unique packet trace capability allowing every node in an Ember development network to report time-stamped radio traffic, API activity and application prints across an Ethernet LAN to a centralised PC-based software package – InSight Desktop – which analyses and filters the data for presentation to the user. This not only eliminates the need for separate 'sniffer' nodes and expensive sniffer software, but delivers much more accurate and chronologically synchronised information from a more widely dispersed network than might normally be supported by traditional tools. By making use of the LAN infrastructure already present in most offices, developers can build quite large and dispersed development and test networks, which they can monitor and control from a central location.

Ember InSight Development Kits provide all the basic tools needed to start building these development and test networks. A key component is the InSight Adapter (ISA or ISA3), which provides connectivity across an Ethernet LAN to nodes in the developer's network, allowing remote programming and collection of time-synchronised packet, API and application information from many nodes at once.

InSight Desktop, the key software tool provided with all Ember Development Kits, also includes Ember's AppBuilder tool, which in conjunction with an application framework provided with the EmberZNet PRO stack libraries, enables customers to easily and quickly configure and build ZigBee Certifiable applications using ZigBee public application profiles such as ZigBee Smart Energy and ZigBee Home Automation, as well as custom applications.

These tools, combined with Ember's market leading EmberZNet PRO software stack and Ember's commitment to service, support and training, gives customers everything they need to create high performance, robust, scalable, ZigBee certifiable products in record time.

## Choosing Your Ember Development Kit

Choosing your Ember development kit, is tied to the choice of your Ember chip platform. Some elements of Ember's development kits are common to the different chip platforms, in particular the InSight Desktop software tool, however the hardware (e.g. InSight Adapters) and compilers (e.g. IAR EWAVR, IAR EWARM, xIDE) could be different.

### EM35x Series Development Kit (Part No: EM35X-DEV or EM35X-DEV-IAR)

This kit can be used for EM351 and EM357 system-on-chips (SoC) based development.

Customers starting new ZigBee SoC projects on an Ember platform will most likely want to choose the EM35x Series Development Kit as their start point, due to the industry leading performance and application space on the ARM Cortex-M3 based EM351 and EM357 SoCs. There are two variants:

- EM35X-DEV includes a 30-day trial licence for IAR Embedded Workbench for ARM.
- EM35X-DEVIAR includes a full standalone 256k-limited licence for Embedded Workbench for ARM.

Customers not yet committed to a development program, or those already with licences for IAR EWARM may wish to purchase EM35X-DEV, while customers with a committed program and without pre-existing IAR EWARM licences may wish to purchase EM35X-DEVIAR. An IAR EWARM licence for use with EM35x Development Kit may be purchased separately.

### EM250 JumpStart Kit (Part No: EM250-JMP-R)

Customers who already have EM250 designed into their products and engineering teams familiar with Ember's EM250 SoC platform may wish to purchase additional EM250 Jumpstart Kits and components to expand their development capabilities for this platform. This kit comes with a full licence for InSight Desktop and a full licence for xIDE for EM250, the compiler/IDE required for EM250 development.

## About Ember

Ember Corporation [www.ember.com](http://www.ember.com) develops ZigBee wireless networking technology that enables companies involved in energy technologies—enertech—to help make buildings and homes smarter, consume less energy, operate more efficiently, and keep people comfortable and safe. Ember's low-power wireless technology can be embedded into a wide variety of devices to be part of a self-organizing mesh network. Ember is headquartered in Boston and has its radio development center in Cambridge, England, and distributors worldwide. The company is a promoter and Board member of the ZigBee Alliance and its platform is the "Golden Suite" for 802.15.4/ZigBee interoperability testing.

### US Headquarters:

47 Farnsworth St.  
Boston, MA 02210  
USA  
+1 617 951 0200  
[www.ember.com](http://www.ember.com)

### European Office:

Cambridge Science Park  
Unit 300, Milton Rd.  
Cambridge, CB4 0XL, UK  
+44 (0) 1223 423322  
[www.ember.com](http://www.ember.com)

### Asian Office:

22/F, 3 Lockheart Rd.  
Wanchai, Hong Kong  
China  
+1 852 2862 8075  
[www.ember.com](http://www.ember.com)

### EM260 JumpStart Kit (Part No: EM260-JMP-R)

EM260: Customers with projects involving a large host microcontroller with multiple applications and/or communications devices connected may wish to use the EM260 networking co-processor platform for their ZigBee design. Customers who wish to leverage existing investment and expertise in other microcontrollers may also wish to use EM260.

## Specifications

### EM35x Development Kit

#### Hardware

- EM35x Radio Control Modules Board (3)
- EM35x Breakout Board (3)
- EM35x InSight Adapter - ISA3 - (3)
- EM35x Module Variety Pack (1 Box with 6 modules)
- Radio Frequency Cable (1)
- InSight Port Cable (3)
- Data Emulation Interface Cable (3)
- Power Supplies and Battery Pack (3)
- 8 Port Switch w/4 x POE ports (1)

#### Software

- InSight Desktop
- IAR Embedded Workbench (Trial Version), with EM35X-DEV; OR
- IAR Embedded Workbench for ARM (Baseline Standalone License), with EM35X-DEVIAR

### EM250 & EM260 JumpStart Kit

#### Hardware

- EM250 / EM260 Radio Control Modules (RCM) Board (3)
- EM250 / EM260 Breakout Board (3)
- EM250 / EM260 InSight Adapter (3)
- MC Card to SMA Cable (1)
- InSight Port Cable (3)
- Power Supplies and Battery Pack (3)
- Extended Debug Cable (3)
- 8 Port Switch w/4 x POE ports (1)

#### Software

- InSight Desktop
- xIDE Compiler (1 Seat)

Distributed by:



**ember**  
[www.ember.com](http://www.ember.com)

DEVKIT-0000-0909  
Information contained in this document is subject to change without notice and is presented without express or implied warranty. Ember, EmberZNet and InSight are trademarks of Ember Corporation. All other trademarks are the property of their respective owners. Copyright 2009, Ember Corporation. All rights reserved.

# TEXIM EUROPE

Partner in Electronic Components & Supply Chain Solutions



## The Netherlands

Elektrostraat 17  
NL-7483 PG Haaksbergen  
Tel: +31 (0)53 573 33 33  
Fax: +31 (0)53 573 33 30  
[info@texim-europe.com](mailto:info@texim-europe.com)



## Denmark

Nørregade 15  
DK-9240 Nibe  
Tel: +45 88 20 26 30  
Fax: +45 88 20 26 39  
[info@texim-europe.com](mailto:info@texim-europe.com)



## Belgium

Gentsesteenweg 1154-C22  
Chaussée de Gand 1154-C22  
B-1082 Brussel / Bruxelles  
Tel: +32 (0)2 462 01 00  
Fax: +32 (0)2 462 01 99  
[info@texim-europe.com](mailto:info@texim-europe.com)



## United Kingdom

St. Mary's House, Church Lane  
Carlton Le Moorland  
Lincoln LN5 9HS  
Tel: +44 (0)1522 789 555  
Fax: +44 (0)845 299 22 26  
[info@texim-europe.com](mailto:info@texim-europe.com)



## Germany

Justus-von-Liebig-Ring 7-9  
D-25451 Quickborn  
Tel: +49 (0)4106 627 07-0  
Fax: +49 (0)4106 627 07-20  
[info@texim-europe.com](mailto:info@texim-europe.com)



## Germany

Martin-Kollar-Strasse 9  
D-81829 München  
Tel: +49 (0)89 436 086-0  
Fax: +49 (0)89 436 086-19  
[info@texim-europe.com](mailto:info@texim-europe.com)



## Austria

Lenaugasse 18  
A-7071 Rust  
Tel: +43 (0)2685 46 999  
Fax: +43 (0)2685 46 998  
[info@texim-europe.com](mailto:info@texim-europe.com)

## Texim Europe B.V.

Elektrostraat 17  
NL-7483 PG Haaksbergen  
Tel: +31 (0)53 573 33 33  
[info@texim-europe.com](mailto:info@texim-europe.com)  
[www.texim-europe.com](http://www.texim-europe.com)

