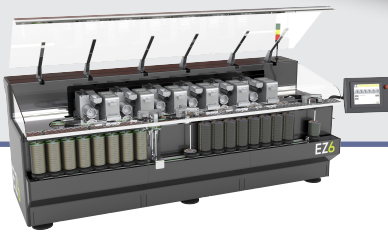


INOVATE
3D Design Collaboration



Turn Concepts into Reality

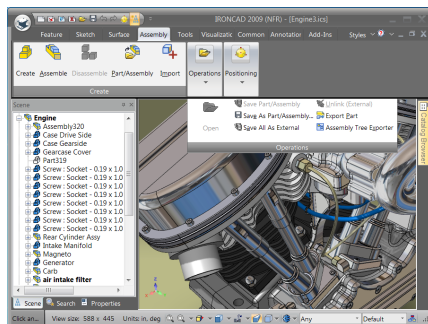


INOVATE™ XG is a low cost, easy to use 3D desktop product for creating, modifying, interrogating and communicating 3D designs. It is the ideal 3D design collaboration tool from concept to production. Its radical drag-and-drop 3D environment delivers unmatched ease-of-use, speed, design flexibility and power making it the most productive 3D concept design and communication tool available. INOVATE bridges the gap between today's viewer technology and a full blown CAD seat. It is perfectly suited for situations where 3D design concepts have to be verified prior to being committed to a formal detail design process. It allows the quick exploration of 3D design concepts and the communication of those ideas through photo-realistic images and realistic motion animations as part of the collaborative process.

INOVATE is equally at home working with existing models which can be

imported, interrogated, modified and communicated to others either as models, photo-realistic images or real world animations. INOVATE is the most complete way to collaborate in 3D.

"The advanced visualization functionalities of INOVATE are very useful when presenting a design to a customer. With INOVATE I can show the customer an exact rendering of the final product. This is crucial when presenting designs to potential customers before prototypes are available."
- Matthijs Metselaar, Schalkwijk



Ease-of-Use

Whether you are working with models, creating a rendering or doing an animation, the same basic concepts of drag and drop, right mouse property access and handles are utilized throughout, making INOVATE the easiest and most cost effective 3D design tool available. It is based on the same award

winning user interface technology as IRONCAD. Its user interface has been designed to allow members of the extended design chain to productively participate in the design realization process.

Model concepts can be created by simply dragging intelligent 3D features (IntelliShapes™) from pre-built catalogs and dropping them into a scene or onto an existing part. Modifications can be accomplished by simply pulling on dynamic handles, or through property pages, accessed through a simple right mouse click. IntelliShapes are designed for maximum flexibility and can be fully parameterized. This revolutionary Creative Design approach is The Fastest and Easiest Way to Conceptualize in 3D.

Design Conceptualization

The integration of powerful, high-end visualization and animation technologies into the core of INOVATE makes the entire design process faster, more productive, and easier to understand.

Real-time detail representations such as texture, bump, and decal mapping are fully integrated to save time and valuable data space. Effective communication to all contributors, at every phase, enhances collaboration and speeds the product development process.

In addition to the visual realism, INOVATE allows models to be set in motion with the addition of SmartMotions™. SmartMotions are pre-created drag and drop key frame animations with editable paths providing truly realistic motion. Once created, the animations can be shared with others as animated GIF or AVI files.

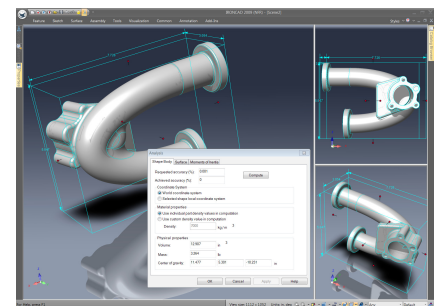
Design Communication

The design visualization, collaboration features and ease-of-use makes INOVATE the perfect tool for Engineering, Marketing, Sales and Training to illustrate and communicate product features either through the use of animations or through directly importing 3D design models into marketing and sales brochures. This versatile use model of INOVATE takes 3D models beyond the engineering design community.

Being able to communicate is good, but sharing live project data requires control and management. INOVATE's Next Generation suite includes, CAXA EDM a powerful and integrated fully functional EDM solution to manage your CAD and related engineering project data, both internally and externally across the world wide web.

INOVATE supports a rich set of data translators (IGES, STEP, ACIS, Parasolid, CATIA, Pro/E, STL, more.....) that allow it to exchange data with all of the leading CAD systems. Once in INOVATE, the user can FULLY edit the model data (not just a subset of recognized features) enabling true upstream and downstream design collaboration. This makes it the perfect companion tool to your existing CAD tools.

INOVATE allows engineers to confidently exchange and make use of 3D CAD data throughout the design process, as well as enabling users to share parts or assemblies throughout the design process. INOVATE supports the creation of custom catalogs such as families of standard parts, which dramatically improves design productivity and facilitates the easy transfer of critical design data between design chain participants.



Contact your local IronCAD Representative: