

Release:	No. 559, June 16th, 2015
Contact:	Walter Meyer
E-Mail:	wmeyer@isravisision.com
Phone:	+49 (0)6151 948 - 172

The Key to Efficiency and Performance: Automated System Tuning

System Start-Up TWICE as Fast than before

Aachen, Germany. ISRA PARSYTEC, the world's leading supplier of surface inspection systems for the metal industry, now offers Fast Tuning technology for SURFACE MASTER inspection systems, making the latest tuning technologies and simple defect classification possible while ensuring extraordinarily fast automatic parameter optimization. As a result, metal producers benefit from a much easier and faster system set-up than ever before.

The latest surface inspection systems often require a great deal of time to initially install and as a result can be extremely costly. Typically, prior to actually classifying the defects, they must first be categorized and the parameters must be defined. Manual parameter tuning can often-times take weeks or months to complete, and even the best results are not able to optimally convey whether defects are 100% reliably detected or if there are a minor number of false positives. In contrast, ISRA Parsytec's automatic system tuning requires only a few short minutes to enable a "best-in-class" defect search with only a minimum number of defects.

With thousands of installations worldwide ISRA VISION Parsytec has already performed at customer's locations. Fast Tuning technology is equipped with a pre-installed set of defect classes, increasing the speed of implementation and initial installation considerably. Once the relevant defects have been marked, the system is able to find all comparable defects on its own and all that the user needs to do is confirm them. Usually, at this point categories are broken down into four clas-

ISRA VISION PARSYTEC AG
Pascalstrasse 16
52076 Aachen
Germany
Tel.: +49 (2408) 92700 0
Fax: +49 (2408) 92700 500
info@isravisision.com
www.isravisision.com

Release:	No. 559, June 16th, 2015
Contact:	Walter Meyer
E-Mail:	wmeyer@isravision.com
Phone:	+49 (0)6151 948 - 172

ses: critical defects and those of less significance, false positives and material structures. The "classifier" created in this manner now calculates various optimal solutions and offers a selection of first-class classifier set-ups. Because no defect detection can offer one single perfect solution, but instead several good options, the optimization task is solved using the Pareto principle, applying this unique method. Fast Tuning is able to automatically account for the complex dependencies between each of the individual parameters, a major step forward compared to previously used methods.

Parameters are optimized automatically based on the four categories using approximately 50 attributes for each individual defect. Automated algorithms are far superior to the manual process, in particular when the purpose is to find the best possible operating point in a 50-dimensional space, allowing defects to be ideally assigned.

Fast Tuning is the latest example of how ISRA VISION Parsytec, the global market leader in surface inspection, continues to come up with even more sophisticated automated methods to achieve the best surface inspection results faster than ever before. In addition, metal manufacturers benefit from the significantly simplified handling and the lightning-fast set-up times of the inspection systems, reducing the return-on-investment to a minimum of the service life.

About the company

ISRA VISION PARSYTEC AG is the world's largest supplier of surface inspection systems in the metal industry: 18 of the top 20 steel manufacturers make use of ISRA products. With more than 540 installations around the globe, customers not only benefit from an advanced surface inspection system, but also receive reliable and comprehensive

ISRA VISION PARSYTEC AG
Pascalstrasse 16
52076 Aachen
Germany
Tel.: +49 (2408) 92700 0
Fax: +49 (2408) 92700 500
info@isravision.com
www.isravision.com

Release:	No. 559, June 16th, 2015
Contact:	Walter Meyer
E-Mail:	wmeyer@isravision.com
Phone:	+49 (0)6151 948 - 172

information about the relevant surface defects on all production levels. The innovative EXPERT5i software solutions allow the customer to prepare customized surface quality and yield management applications while integrating surface quality data with process data.

The ISRA VISION Group is the world's largest and most competent supplier of surface inspection systems. The systems are used in the glass, paper, banknote paper, plastics, non-wovens, print and metal industries. The ISRA VISION Group, with its headquarter offices in Darmstadt and Aachen, does business on a global level through locations in 25 other branch offices around the world in places like North America, Korea and China.

Images

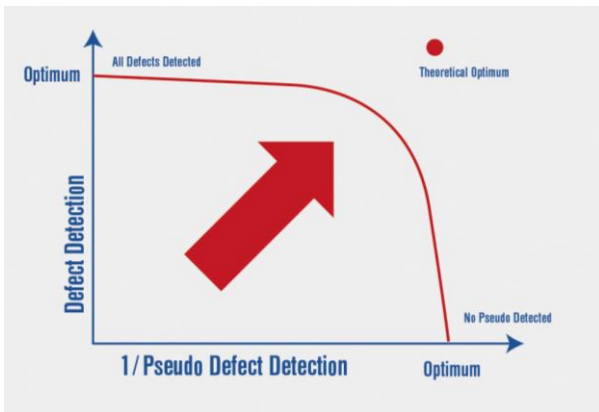


Image 559-1:

Automatic system tuning makes system start-up TWICE as fast and more efficient, finding the "Best-In-Class" defect tracing, optimizing production

ISRA VISION PARSYTEC AG
 Pascalstrasse 16
 52076 Aachen
 Germany
 Tel.: +49 (2408) 92700 0
 Fax: +49 (2408) 92700 500
info@isravision.com
www.isravision.com

PRESS NEWS

Release: No. 559, June 16th, 2015
 Contact: Walter Meyer
 E-Mail: wmeyer@isravision.com
 Phone: +49 (0)6151 948 - 172

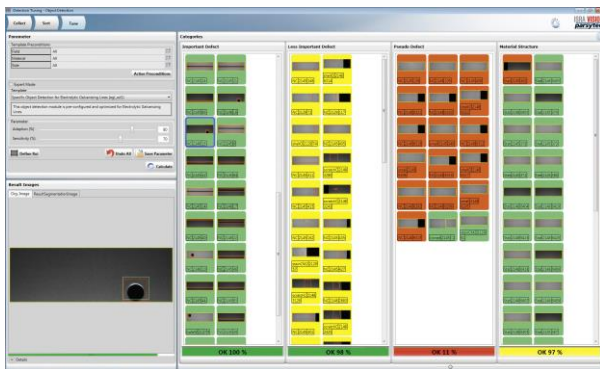


Image 559-2:
Generates high quality yield in the shortest times:
Automatic system tuning software for SURFACE MASTER

ISRA VISION PARSYTEC AG
 Pascalstrasse 16
 52076 Aachen
 Germany
 Tel.: +49 (2408) 92700 0
 Fax: +49 (2408) 92700 500
info@isravision.com
www.isravision.com