



**THE MORE YOU SEE THE MORE YOU GET!**

# **PRODUCTS & SOLUTIONS**

eyevis from Reutlingen in Germany is specialized in the development and production of high-quality large screen systems and guarantees a continuous further development in high-tech, quality and complete, specific customer display solutions. Besides the rear projection units, based on the DLP® Technology from Texas Instruments and controllers to manage multi-projection walls, eyevis is also developing intelligent software solutions to achieve a complete, unique and perfect large screen system. The name eyevis stands for quality, innovation, flexible and redundant systems and solutions in the area of large screen displays. For every application eyevis offers a solution tailored to your individual requirements with the best image quality.



The product range also includes high-resolution TFT LCD monitors and special solutions for simulation and virtual reality applications.

The result of this "state-of-the-art" philosophy is the permanent development of products that constitute cutting-edge technology in their field of application. This makes eyevis one of very few manufacturers that are able to provide complete systems – high-end quality "Made in Germany".

Relying on eyevis, means being sure that all customers' requirements regarding their large screen systems can be fulfilled, in order to create a complete, unique and perfect system.



) **EC Cube®**



**EC Cube Series:** DLP® rear-projection cubes especially developed for video walls in continuous operation.

) **Sizes:** 50", 60", 65", 67", 70", 80", 84" & 100"

) **Resolutions:** XGA, SXGA, SXGA+, HD, WUXGA

) **Different illumination technologies:** UHP lamps (life-time ca. 10,000 hrs) or LED technology (ca. 55,000 hrs)

) **Seamless design** for minimal gaps between the cubes (<0.3 mm)

) **Options**

- basements on rails
- double-lamp systems for UHP cubes
- front-maintenance access
- dust-proof housings
- automatic Multi-Cube colour and brightness adjustment
- multi-touch control
- different screen alternatives

) **EYE-LCD**



**EYE-LCD Series:** Professional LC displays for sophisticated applications.

) **Full HD displays** in 40", 42", 46", 47", 52", 55", 65", 70" and 82"

) **Ultra hi-res displays:** 56" with quadHD resolution (3,048x2,160 px) and 64" with 4K resolution (4,096x2,160 px)

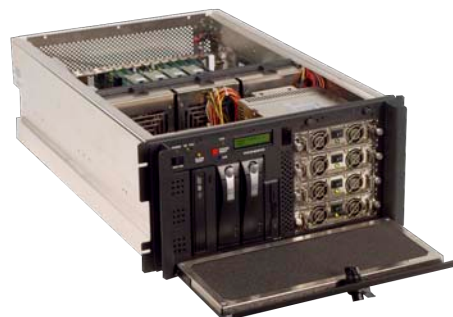
) **LC display modules with narrow bezels**

- 40" full HD (1,920x1,080 px)  
Gap screen to screen: 28 mm
- 46" full HD (1,920x1,080 px)  
Gap screen to screen: 30 mm
- 52" full HD (1,920x1,080 px)  
Gap screen to screen: 40 mm
- 46" WXGA (1,366x768 px)  
Gap screen to screen: 7.3 mm

) **Options:**

- Wallmounts, racks, stands on wheels
- Touch control
- Outdoor LC displays

) **netpix®**



**Netpix Series:** High-end graphics controllers for large screen systems in control rooms.

) **Connectivity:** Provides inputs for almost any kind of signal type. Inputs are customisable according to the customer's requirements

) **IP Streaming Video Decoding:** Special input cards for hardware decoding of multiple IP streams

) **Flexibility:** Different versions available for control rooms of any size. Special redundant versions for highest availability.



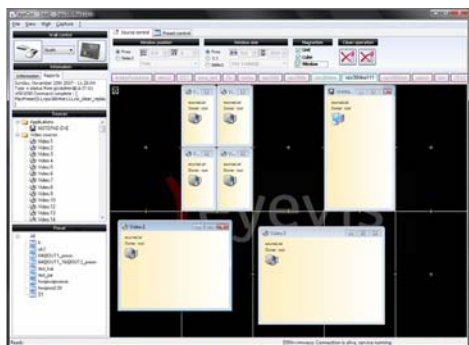


**eyecon® Wall Management Software:**  
Perfect control of your large screen system and all connected signals.

**Different versions:** The Modular design of the software allows customisable installations depending on the features you really need. There are three different versions available: Basic Lite, Basic and Premium.

- Many useful tools and features:**
- Customisable user licenses
  - API Support RS232, TCP/IP, ODBC
  - eyecon LAN Remote wall mouse & keyboard control from client stations
  - eyecon Reporter providing error messages via eMail or TCP/IP, RS232
  - WebControl HTML/PHP API Support
  - Support of NoneSquare display configurations with Multi-Resolution & Pivot function for Netpix 3x00 Range
  - eyecon Capture
  - eStreamer Support
  - Support of multiple video walls
  - MultiCropping for Video, IP streams, RGB/DVI

- Alarm Management:**
- ColourDetection
  - SNMP
  - SMS incl. GSM Hardware
  - I/O Inputs incl. Hardware
  - Macro / Alias Support / Alarm
  - Definition Creator



- ) ABB Automation & Power Technologies
- ) Abertis
- ) ADIF
- ) Alice
- ) ANAS S.p.A.
- ) Audi AG
- ) BMW AG
- ) Bayer AG
- ) Daimler AG
- ) Deutsche Telekom
- ) Eon
- ) French Ministry for Foreign Affairs
- ) Gazprom
- ) German Bundeswehr
- ) Hennessy
- ) KEPCO - Korea Electric Power Corporation
- ) Ministry of Interior Iraq
- ) Mosenergo
- ) NATO SHAPE Mons
- ) Oman Mobile
- ) Petrobras
- ) President Offices Mexico
- ) RAI Way S.p.A.
- ) Ruhrgas
- ) RWE
- ) Seif Palace Kuwait
- ) Siemens AG
- ) UNO Geneva
- ) US Army
- ) Vattenfall
- ) Vodafone
- ) Volkswagen
- ) ZF Group
- ) Numerous police departments and military applications
- ) Public utilities, power plants and airports all over the world

## openWARP<sup>2</sup> + ESP Projectors



**openWARP<sup>2</sup> - The perfect tool for real-time image correction.**

Whether you wish to improve individual projectors, stereo projections or combined multi-channel projections, openWARP<sup>2</sup> and ESP projectors are a first choice for all of these applications. With openWARP<sup>2</sup> you can realise any image distortion and colour and brightness corrections to achieve optimal uniformity.

- Application Possibilities:**
- Training and Simulation
  - Virtual and Augmented Reality
  - Entertainment
  - Rental/Staging

## eyevis Accessories



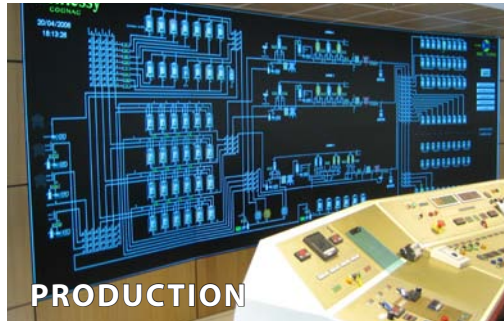
### Accessories for coherent Systems

eyevis provides a wide range of accessories for its large screen systems. The range contains different basements for the EC Cube Series, optical DVI cables for perfect signal transmission, Scalers for resolution adjustment, and many more. In order to fulfil our customers' demands as good as possible, we provide several options for our products. We are also able to realise special solutions for specific situations.





TRAFFIC



PRODUCTION



ENERGY



TELECOMMUNICATION



SECURITY



SIMULATION

**THE EYEVIS NETWORK:**

eyevis' worldwide network includes authorized resellers and service partners in several countries in every continent:

- ) Europe
- ) Asia
- ) USA/Canada
- ) South America
- ) Middle East/Africa
- ) Australia



**EYEVIS OFFICES GERMANY:**

- ) Erlangen
- ) Leipzig
- ) Munich
- ) Oldenburg
- ) Speyer

**EYEVIS OFFICES INTERNATIONAL:**

- ) India - New Delhi
- ) Italy - Rome
- ) Poland - Katowice
- ) Russia - Moscow
- ) UAE - Abu Dhabi
- ) UK - Burnley
- ) USA - Atlanta

**EYEVIS OFFICES ASIA:**

- ) ASEAN Countries
- ) Taiwan
- ) Hong Kong
- ) China - Beijing

**PRODUCTION PLANT:**

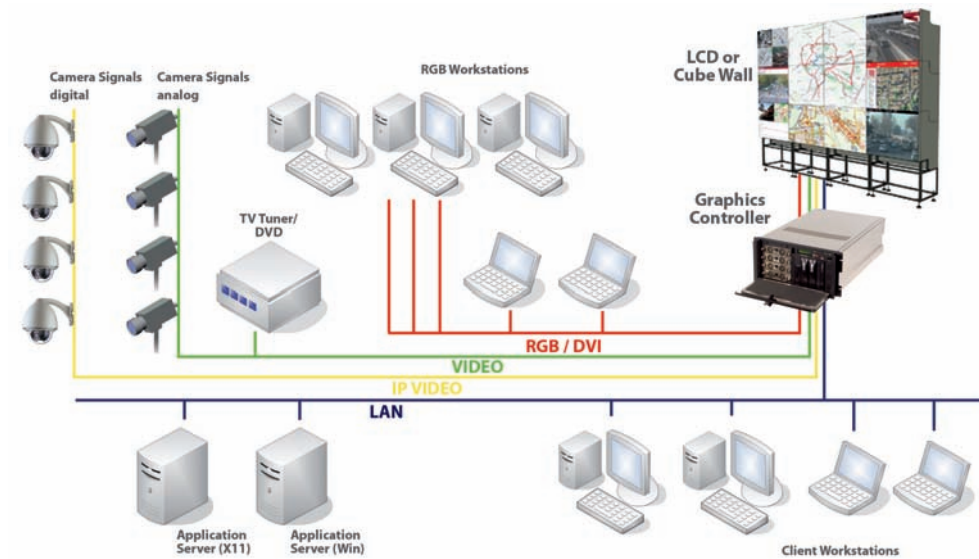
- ) Germany

**SUBSIDIARIES:**

- ) France

Mail to [marketing@eyevis.de](mailto:marketing@eyevis.de) to find your local eyevis dealer.

) EXAMPLE OF A LARGE SCREEN SYSTEM SETUP



As at: 2009 | Subject to change without prior notice. Registered trademarks are property of the respective companies. Copyright: © 2009 eyevis GmbH. All rights reserved.

) CONTACT



**eyevis GmbH**  
 Hundschleestrasse 23  
 72766 Reutlingen  
 Deutschland

Tel.: +49 (0) 7121 43303-0  
 Fax: +49 (0) 7121 43303-22  
 Web: [www.eyevis.de](http://www.eyevis.de)  
 E-Mail: [info@eyevis.de](mailto:info@eyevis.de)

